



The school's vision is: *"We live life in all its fullness."* This is incorporated in the whole school's mission and is underpinned by character Gateways - Leadership, Explorers, Citizenship, Expression and Flourishing.



This welcome pack is designed to give you information on the aims, organisation and learning that happens at Tiny Torre Nursery, and hopefully answer many of your questions. The school offers regular school visits throughout the year for new families to visit, so we would encourage you to come along and talk to our staff in person. Once you have been offered a place for your child you will be invited for a welcome meeting and taster session to explore the nursery in more detail. If you have any further questions all of our contact details can be found on our website. We value our families contributions and believe that home and nursery working in partnership can provide the best learning experiences for your child.

EYFS Nursery - Tiny Torre



Tiny Torre is part of the Foundation Unit at Torre C of E Academy.

Aims

- ❖ We aim to provide a happy, safe, caring and stimulating environment: a place where all children can play, learn and develop together.
- ❖ We aim to offer well planned, purposeful and relevant play activities through which children can develop socially, emotionally, spiritually, intellectually and physically.
- ❖ Our aim is to ensure that all children feel included, secure and valued.
- ❖ We aim to work in partnership with parents and carers, building and developing on what the children already know and can do.

Starting at Tiny Torre Nursery

Joining nursery is an exciting moment in a child's learning, preparing them for the journey onto school. At Tiny Torre we observe and plan for children individually, ensuring that each child has the opportunity to learn and develop a broad range of skills through play and discovery, based on their interests and level of

development

The nursery is set up with different areas such as the role play area, several reading areas, mark making resources, small world and construction play. This ensures that each child has the opportunity to learn and develop a broad range of skills through play and discovery, based on their interests and level of development. There are also lots of creative resources set up for the children to select independently which allows them to develop independence and provides opportunity for their own creative ideas to flourish. All mark making experiences are important steps in developing strength in their fine motor skills and control to assist learning to form letters as they reach school age. Practitioners support children by providing challenges and encouraging them to take safe risks and have a can do attitude. The children are provided with activities that allow them to build on their existing skills as well as having the opportunity to take part in new experiences and explore the world around them.



As a school we teach phonics using Read, Write, Inc. We start by fully immersing the children in stories, nursery rhymes, poems and songs. This develops a love for language and helps to sustain attention, learn thousands of new words, understand emotions of others, and makes connections with the past, present and future to name a few of the many benefits. From the start of nursery we encourage you to join us in this exciting journey of discovery, by providing a **book bag** for your child. Your child will choose a book from our collection each week to share with you daily at home. Please refer to our favourite stories, nursery rhymes, poems and songs on our website for ideas of suggested titles for your home reading collection. From the spring term onwards, the children are introduced to new sounds and lots of fun and exciting activities to explore.

Tiny Torre has a covered free flow area that allows the children to access the outdoor area in all weathers. They also benefit from an extensive playground and garden area with climbing areas, a space for trikes to be ridden and circle games and group games to be played, a mud kitchen, a giant sand pit and areas where stories are shared and created together.

Settling in

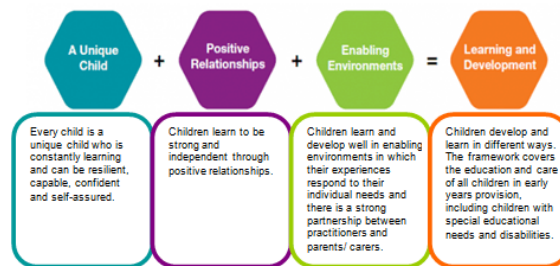
During the first week of nursery there will be a phased start for all of the children with a maximum of five children joining each session. This enables us to spend time with your child, which in turn will contribute towards your child feeling settled, safe and secure. The date for your child's settling in session will be given to you by the office. You are welcome to come for a short time for the first session, but we are more than happy if you would like to leave them with us. Once they have had this first session your child is able to come in according to the sessions you have booked with the office.

It would be helpful to prepare your children for the nursery by talking to them about what to expect. There is a **Daily Routine** section on the website which will support you and your child in this transition process. On your child's first official day we will show you both where to hang his/her coat. Don't worry if he or she clings to you or stays firmly at your side as there is no pressure for them to join in until they feel comfortable with their new surroundings. Eventually, when your child appears occupied and settled, say goodbye and leave. Please don't try and slip away as this will alarm or confuse them. At first the separation will be brief-perhaps only 20 minutes and after discussions with you, we will gradually increase the time until you are leaving your child for the session. If you continue to feel anxious or worried then we are happy to telephone you and let you know how your child is settling in. Please do not promise them treats if they are good, it is important that they are happy to stay because they want to. Every child is different: some settle in a few days, others may take longer. We need to get to know your child and he/she must know and trust us. We ask you to have patience and understanding and allow your child to settle at his/her own pace.



The Early Years Foundation Stage

The Early Years Foundation Stage (EYFS) sets standards for the learning, development and care of children from birth to 5 years old. All schools and Ofsted-registered early years providers must follow the EYFS, including childminders, preschools, nurseries and school reception classes. The EYFS is split into four principles.



There are seven areas of learning and development that shape our educational provision, these are all important and interconnected. They are split into **Prime Areas** which are crucial for igniting children's curiosity and enthusiasm for learning and for building their capacity to learn. These are followed with four **Specific Areas**.

Prime Areas

- Communication and Language (CL)
- Physical Development (PD)
- Personal, Social and Emotional Development (PSED)

Specific Areas

- Literacy (L)
- Mathematics (M)
- Understanding the World (UW)
- Expressive Arts and Design (EAD)

As well as the EYFS, we also study Religion and Worldviews Education (RWE) which specifically links to Understanding of the World and other areas of the curriculum.

Children develop at their own rates and in their own ways. The development statements within the EYFS is split into broad age bands and the online learning diaries will track your child's progress through these stages and contribute to the next steps in their learning journey

Meet the EYFS Nursery Team



Mrs. Beard - Nursery Teacher



Mrs Lindsay – Teaching Assistant



Mrs Cannon – Teaching Assistant

Your child's learning journey

Sharing your child's progress and achievements is important to us and we communicate in a variety of ways.



- Tapestry is an online interactive learning diary with a collection of photos, work and observations showing your child's development over the time they are with us in the EYFS. You will have access to your secure online Tapestry account as soon as your child starts Tiny Torre and they are registered on the system. This link between the nursery and parents is vital as we see parents as partners. Any observations or achievements your child makes at home are equally important as their achievements that they make in nursery and we would like you to upload these achievements on Tapestry. This information will help us to build up a bigger picture of what your child can do and what they enjoy. Nothing is insignificant to us if it means something to you and your child.
- We have an open door policy whereby you can contact us face to face at the start or end of the session, via the schools email address or call between the schools working hours.
- We offer two parents meetings each academic year with the class teacher where we discuss your child's progress across the EYFS and areas that are being focused upon for development.

Additional Needs

We believe that all children should have the opportunity to learn and reach their full potential. We understand that as children go through this journey individual needs might become evident.

As part of the school we have a Special Educational Needs Co-ordinator (SENCO) who works closely with the nursery. We also have a Family Support Worker in the school who can provide support for you as a family or for your child.

Early Help can also be accessed which aims to ensure that services to support children, young people and their families are there when they need them. Early Help is about identifying problems at an early stage and providing purposeful and effective help.

Session Times

Morning session: 8:50—11.50 (no lunch session)

Afternoon Session: 11:50—3:00 (to include lunch session)

The nursery operates flexible hours, offering places for 26 children within any session. Children come to the nursery for either a whole day or for half a day. There is a breakfast club available in the hall from 8am at £1.75 per child payable via School Money. You will be able to drop off and collect the children at the main nursery entrance at the beginning and end of each session. We especially ask that they are collected on time at the end of the nursery day. The children can become upset or worried if parents or carers are late. Children must be brought and collected by an adult. If someone else is to collect your child, please tell one of the nursery staff in advance and ensure their details with a password is written on the official collection sheet.

If your child is going to be absent, please let us know in advance or by telephoning the school on the day.



Stay and Play

This is an opportunity for families to join in with some of the activities that take place in nursery. The sessions take place for half an hour at the end of a nominated day each week. The day will change over the year as we try to give as many children this opportunity with their families. We use the Peep Learning Together resources to provide stimulating activities and ideas in order to value and extend learning

opportunities in everyday life and support the development of the home learning environment.



Home learning

Alongside the promotion of reading at home by sharing a nursery book at home, we also have a selection of story sacks that can be borrowed in the spring term with lots of fun activities linked to a text. In the summer term we start our Learning Together bags which supports the children's transition into Reception.



Uniform

The uniform for Tiny Torre includes a white polo shirt (short sleeved), grey skirt/pinafore/trousers/navy joggers and a Tiny Torre jumper. Black school shoes with velcro (no laces). Grey socks or tights. All the children need at least one spare set of clean clothes which can be of any type (this does not need to be uniform). It is helpful if every child has their own PE bag on their peg containing a spare set of clothes for emergencies. As we go out in all weathers a pair of Wellingtons boots, to be kept in the nursery, are also needed. Please ensure all items of clothing are clearly marked with your child's name so that if they are mislaid items can be returned to their rightful owners.



Snacks and cooking

During the session the children have a snack. This is usually milk or water and fruit. We also like to introduce dried fruit, biscuits or seasonal foods. The children take part in regular cooking activities and enjoy trying the different foods that they have created. To cover this cost we ask for £5.00 each term.

Lunchtime

Your child is able to have a hot school dinner or they can bring a packed lunch from home. As a school we promote healthy eating therefore we ask that no chocolate, sweets or fizzy drinks are included in their packed lunch. School dinners cost £2 and payment is made via School Money once your child has started using a unique login code. We ask that you inform us if you wish your child to have a school dinner or packed lunch on the board outside the nursery, so that we have accurate numbers for school dinners every day.

Thank you for taking the time to read through this information.

Remember to check out the daily routine and reading list on our website.

If you have any questions then please don't hesitate to ask a member of staff and we will try our best to help.

